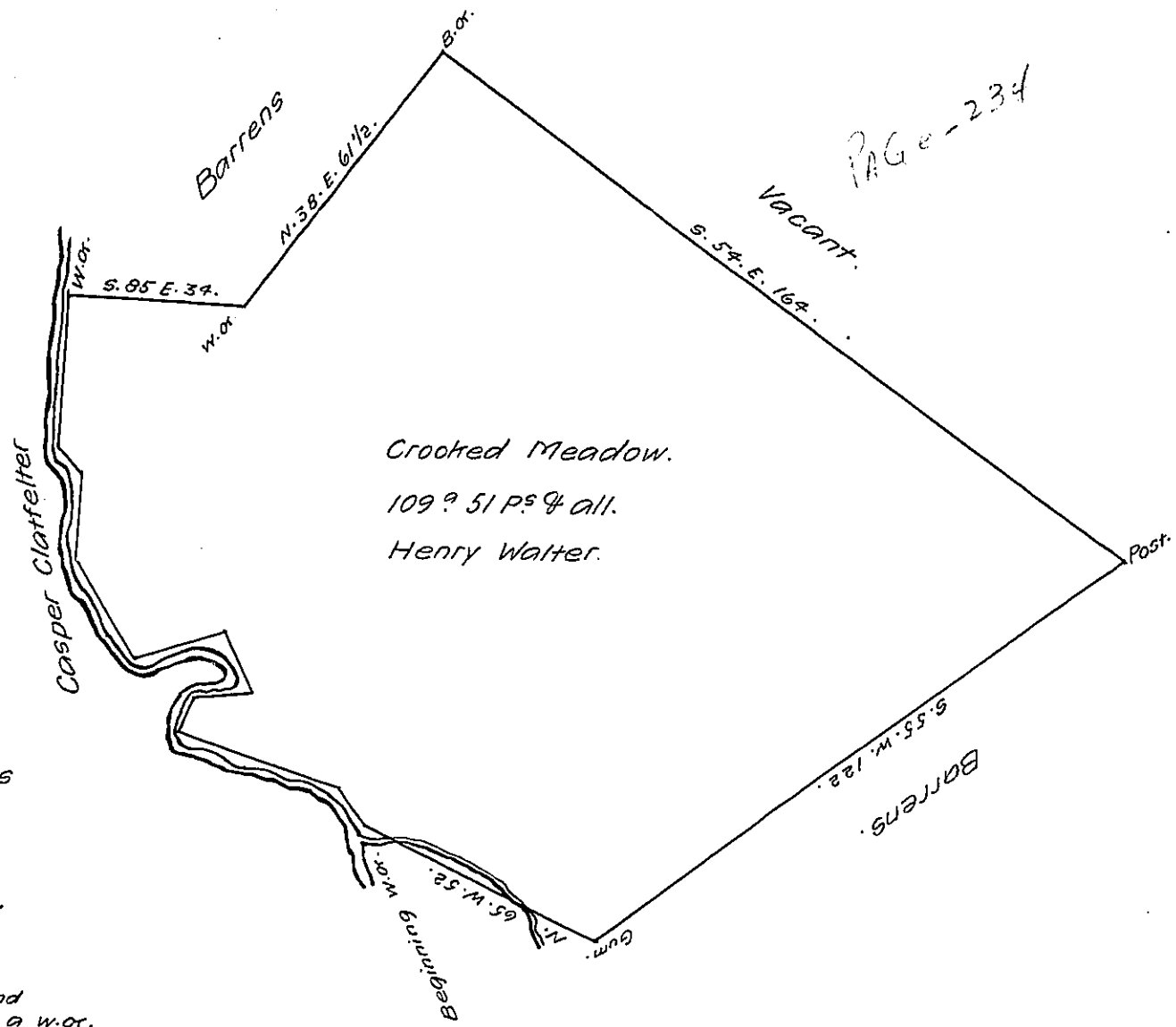


PAGE-234



- Down Codorgs
- N. 37. W. 8
  - N. 72. W. 33.
  - N. 20. E. 7.
  - N. 86. E. 12.
  - N. 25. W. 12 1/2.
  - S. 72. W. 18.
  - N. 33. W. 22
  - N. 4. E. 16.
  - N. 40. W. 6. and
  - N. 3. E. 30 to a w. or.

situate in Shrewsbury township York County Surveyed the 30<sup>th</sup> of the 12<sup>th</sup> mo<sup>th</sup> 1769 in pursuance of a warrant for 100<sup>a</sup> dated the 20<sup>th</sup> day of December 1769.

F. W. Matthews D<sup>y</sup> S.

To John Lutrens Esq<sup>r</sup>  
Survey<sup>r</sup> General.

IN TESTIMONY that the above is a copy of the original remaining on file in the Department of Internal Affairs of Pennsylvania, made conformably to an Act of Assembly approved the 16th day of February, 1833, I have hereunto set my Hand and caused the Seal of said Department to be affixed at Harrisburg, this twenty second day of April 1907.

*Loach P. Brown*  
Secretary of Internal Affairs.